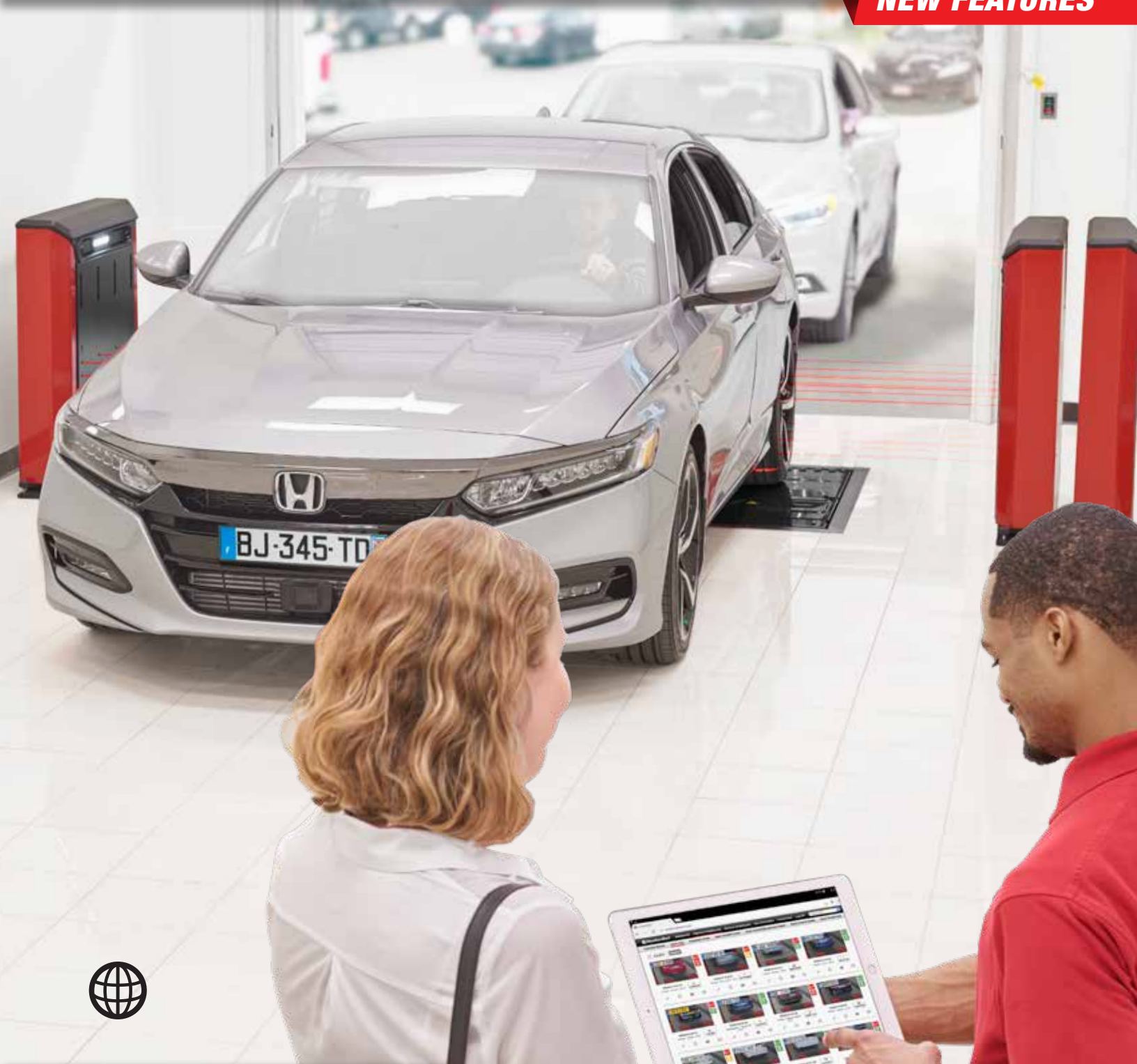


Quick Check Drive[®] Inspection

Autonomous Alignment and Tread Depth for the Service Drive

NEW FEATURES



Featuring Flightboard™ —
At-A-Glance touchless inspection results



Honda : Accord : 2017

D LDSD585

11:43

Wheel Alignment



Recommend a comprehensive alignment check

Front Tires



Rear Tires



Unmanned Inspection At-A-Glance

PATENTED

Automatic Alignment Results

- ✓ **Quick Check Drive®** — Touchless total toe and individual camber
- ✓ **Quick Tread Edge®** — Measures tread depth, analyzes data on-site, and instantly displays results
- ✓ **Boost most profitable undercar services**
- ✓ **No additional labor required**

NO STOPPING

PLEASE
DRIVE
FORWARD

NO LABOR



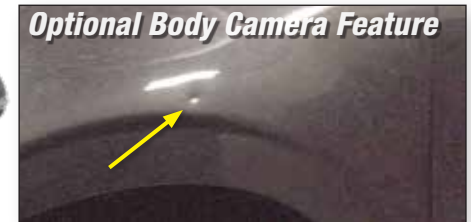
Vehicle Identification

Automatically determine OEM specs for most vehicles

PATENT PENDING



Optional Body Camera Feature



Automatic body photos protect against mistaken damage claims



Quick Check Drive® —
A powerful autonomous
alignment inspection system!

Quick Tread Edge® —
Touchless tread depth with
edge wear detection!

Quick Tread Edge® requires a Hunter inspection console.

Vehicle OE warranty policies vary, please consult OE guidelines when establishing vehicle inspection policies.

External identification camera sold separately.

As jurisdiction license plate designs evolve, the use of an external camera is recommended to insure the inspection system's continuous accuracy.

Get Results Your Way

Flightboard™

Provide immediate feedback on customer alignment and tread depth inspections, while alerting them to important safety recall information.



OPTIONAL External Camera



- ✓ Identify characters better, more often
- ✓ Special characters are more recognizable at higher resolution



Standard camera resolution



Optional external camera resolution

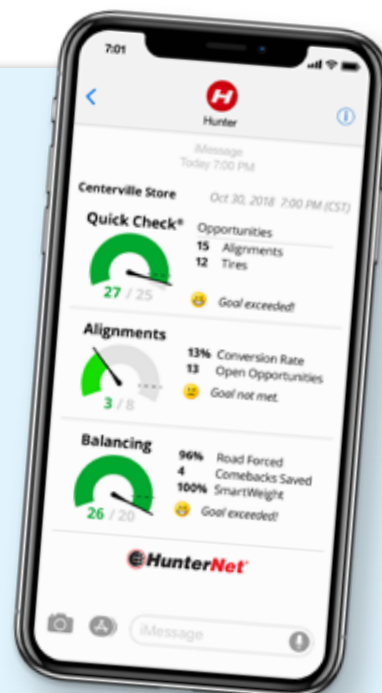
Shop Results

Present detailed inspection information from any PC or tablet with an internet connection.



Push Reports

Daily delivery of inspection rates, opportunities, alignment numbers, and conversions by email and text from your connected Hunter equipment that allows you to compare results to goals you set.



* Requires third-party integration.

Selling and Reporting Tools Powered by

Increase your productivity and revenue with HunterNet® selling tools.

**TAP FOR
DETAILS**



- ✓ Quickly view vehicle service opportunities
- ✓ Access and email detailed inspection results
- ✓ Review body image photos to assess damage claims
- ✓ Edit or resolve vehicle information for proper alignment specs
- ✓ Desktop- and mobile-friendly

**Push Reports —
Measure inspection performance and pinpoint
improvement opportunities with reporting tools.**

Set goals and track performance

- ✓ View inspection rates and opportunities
- ✓ Measure alignment numbers and conversions

Dynamic reporting

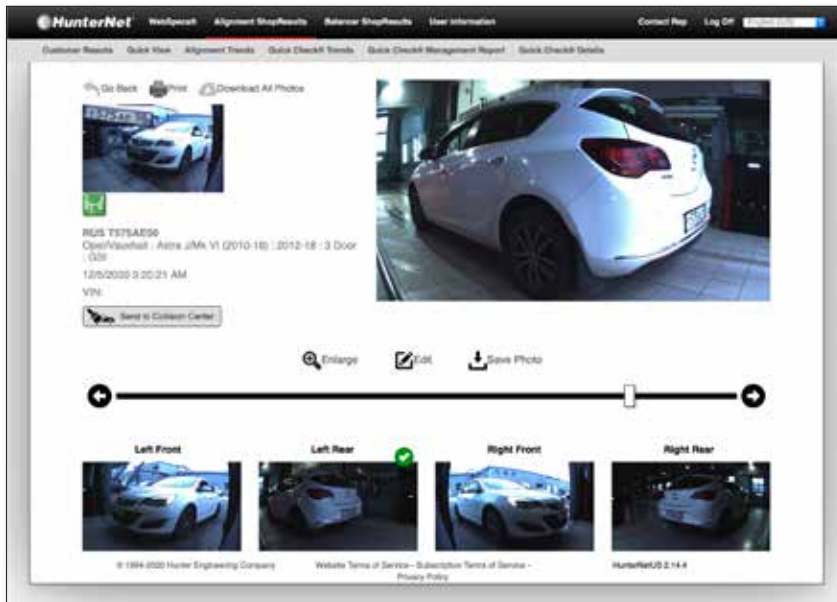
- ✓ Track balancing and Road Force® utilization
- ✓ See 7-day alignment and tire trends
- ✓ Track significant milestones
- ✓ Automatic, daily delivery



OPTIONAL

Automatic Body Image Capture

Using the same built-in high-definition cameras, the body damage cameras enable your dealership to capture 40 or more images per vehicle in the same time it takes to check wheel alignment.



- ✓ Significant savings for your dealership in false vehicle-damage claims
- ✓ Immediate access to your body damage camera images — no need to contact a third-party surveillance company and wait for the images
- ✓ Camera location optimal to capture body images

Use HunterNet® to quickly review vehicle images

- ✓ Intuitive body damage camera interface displays vehicle information and date of service
- ✓ Four cameras capture an average of 10 images each
- ✓ 15-day image storage standard
- ✓ Premium 90-day storage package available

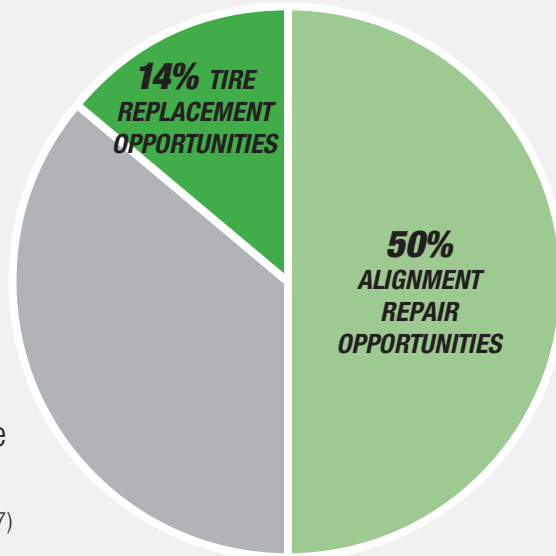


Did you know? Body damage cameras can save thousands of dollars per month on false damage claims. It is not uncommon for customers to be “mistaken” about when damage occurs.

Autonomously Identify Today's Most Profitable Service Opportunities

€4,000*
Potential Tire Revenue Opportunity Per Day

Tire sales are critical to customer retention. Plus, the first to show the tire need and ask for the sale gets the order 85% of the time. (NADA 2017)



€2,500*
Potential Alignment Revenue Opportunity Per Day

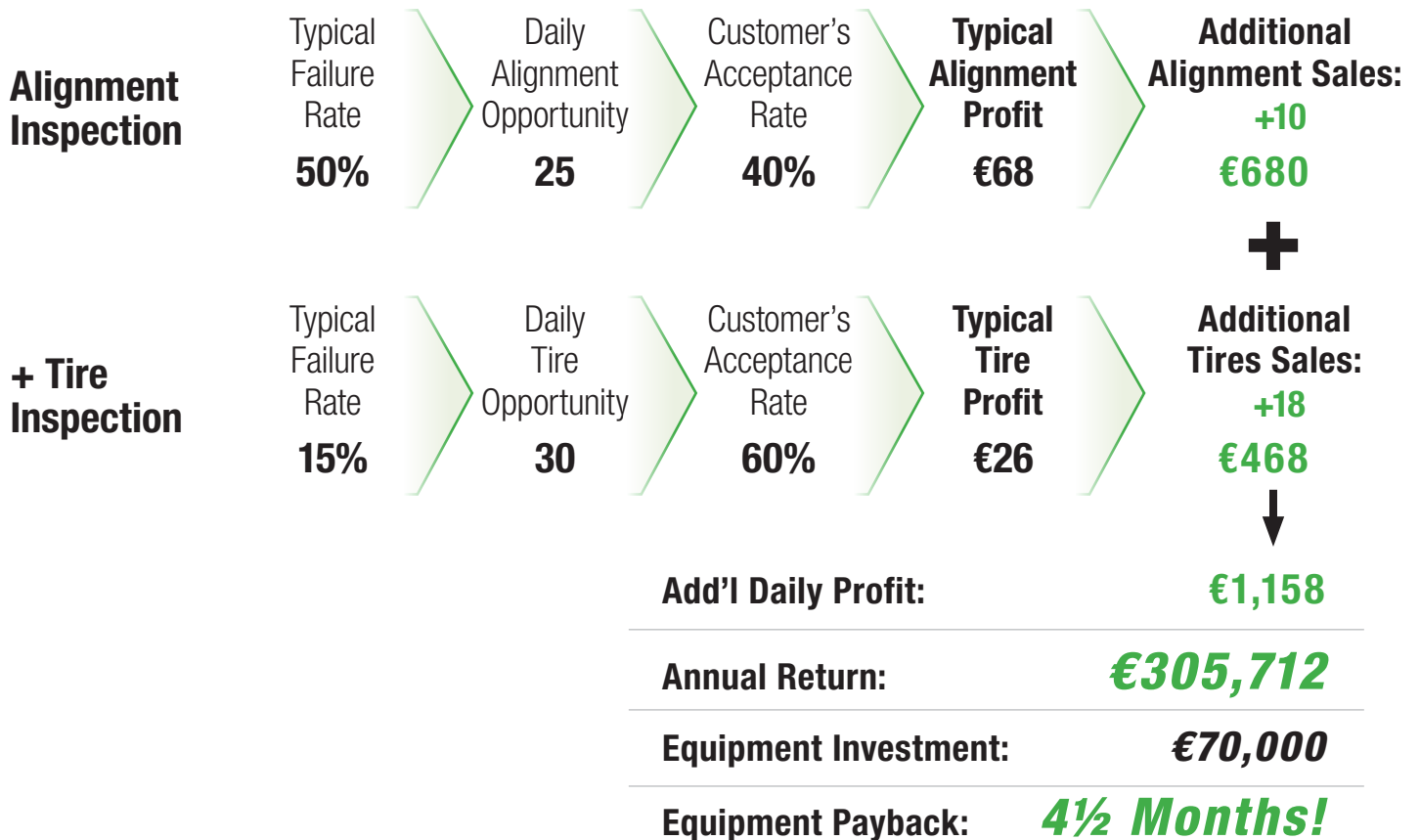
Alignment service has the highest margin in your service department. 68% of an alignment sale is profit. (MTD 2016)

*Based on 50 vehicles per day shop average, an average tire replacement of €150 in revenue, and an average four-wheel alignment of €100 in revenue.

Tire failure rates based on Hunter study of 25,000 vehicles
Alignment failure rates based on Hunter study of one million Quick Check Drive results.

Return On Investment

Vehicles/day: 50



ENHANCED Touchless Inspection: Quick Check Drive® and Quick Tread Edge®

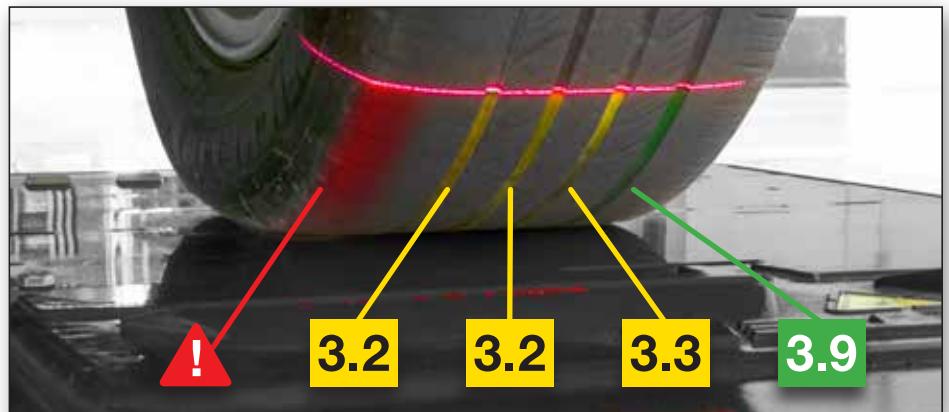
As the vehicle drives through, Quick Check Drive measures **camber, total toe, and rim diameter.**

MADE IN USA
USING THE FINEST US & GLOBAL MATERIALS

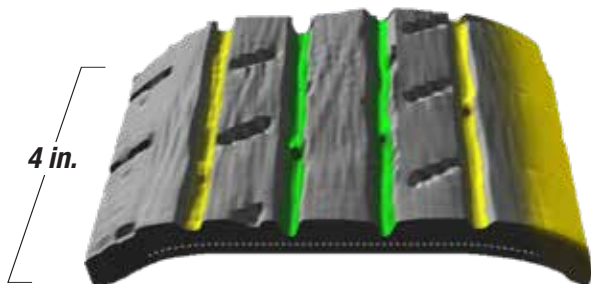
- ✓ Four High-Definition Cameras
- ✓ 8 Cameras and 32 Laser Sensors
- ✓ Intelligent and Fast
 - Scan a new vehicle every 3 to 5 seconds
 - Only activates when vehicle is present



Hunter's tread depth unit, with tire edge wear detection, automatically measures the tread depth of each tire from edge to edge in seconds.



2.4 3.9 4.0 3.3 !



Accurate tread depth calculated for each groove.

- ✓ Flush-mounted Quick Tread Edge® configuration integrates seamlessly with Quick Check Drive®
- ✓ Stores tread depth records to create customer history for use in marketing efforts
- ✓ No recurring monthly charge
- ✓ Built with corrosion-resistant stainless steel, includes self-cleaning air knife

Introducing the Hunter Quick Pit



You want to invest in Hunter's Quick Check Drive® and flush-mounted Quick Tread Edge® inspection system, but have concerns with disrupting your service lane...

Solution: Hunter's single-pour solution simplifies the concrete work for installing Quick Check Drive® and Quick Tread Edge® — a new method to minimize disruption in the service drive. Go from floor cut to concrete cure in as little as eight hours. Timed right, service lanes can be running new Hunter inspection equipment with little to no downtime.

Turn this...



Typical Service Lane

- ✓ Vehicle enters lane for service



... into this.



Fully-Autonomous Inspection Lane

- ✓ Vehicle enters lane for service
- ✓ Vehicle alignment inspected
- ✓ Vehicle tread inspected
- ✓ Vehicle details collected
- ✓ Suggested vehicle services ready for customer review

Quick Pit One-Day QTEF Frame Installation

Step 1: Excavation Pit and Conduit Trench ~ 3 Hours



Step 2: Secure Frame and Run Conduit ~ 3 Hours



Step 3: Pour and Finish Concrete ~ 2 Hours



See it in action (scan QR code)
**and contact your local Hunter
Representative to learn more!**

*For detailed site requirements,
please reference forms 7711-T, 7615-T,
7616-T, and 7617-T.*

*Specific construction processes will vary.
Consult local codes prior to construction.*

PATENT PENDING

Automatic Vehicle Image Identification



1. **WinAlign® analyzes multiple images** using advanced artificial intelligence and machine learning



2. **Deciphers make, model, and generation** to resolve Original Equipment Manufacturer (OEM) alignment specifications

VOLKSWAGEN : POLO : 2018-

3. **Generates autonomous pass/fail alignment inspection results!**



Supported Original Equipment Manufacturers (OEMs)* as of this publication. Visit unmanned inspection page of www.Hunter.com for a current list of OEMs.



*Quick AutoID™ is able to identify vehicles sold and driven in European markets. Quick AutoID™ requires WinAlign® 16.3 and Body Damage Camera feature (BDC).

PATENT PENDING

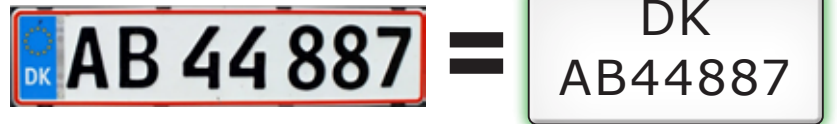
Automatic License Plate to Alignment Spec Resolution



1. Cameras capture license plate in motion



2. QuickPlate™ identifies license characters and country codes



3. QuickPlate™ obtains the corresponding KType number to resolve Original Equipment Manufacturer (OEM) alignment specifications

**Volkswagon : Passat : 2015-19
(B8 - 3G) : Standard**

Currently Supported Countries



QuickPlate™ requires WinAlign® 16.2.

Configurations for Every Shop

Integrate Quick Check Drive® with flush-mounted Quick Tread Edge® to build the most profitable unmanned inspection system.

Entrance Configuration – RECOMMENDED



Exit Configuration



Middle Configuration

Site Considerations:

- ✓ Hardwired internet connection required for Quick Check Drive®
- ✓ Weather protection recommended as warranted by local conditions
- ✓ Impact protection recommended as warranted by lane layout
- ✓ Body damage cameras and QuickAuto ID require uniform and reasonably bright lighting



Please see your Hunter Sales Representative for details
Be sure to check out other Hunter literature for more quality products from Hunter Engineering.

Quick Check, Quick Check Drive, Quick Tread, Quick Tread Edge, HunterNet, and WinAlign are registered trademarks of Hunter Engineering Company. Quick AutoID and QuickPlate are trademarks of Hunter Engineering Company.



HUNTER
Engineering Company.
www.hunter.com