

Collision Repair Alignments

Keep more profits in-house!



Fits...

- ✓ **Chief®**
- ✓ **Car-o-Liner®**
- ✓ **Other leading brands**

Benefits of Performing Alignments In-House

Check Alignments

- ✓ Find hidden damage when writing the estimate
- ✓ Locate...
 - Shifted or damaged subframe or unibody
 - Damaged lower control arms
 - Shifted or damaged axles
 - Bent spindles, and more
- ✓ Reduce supplements
- ✓ Order parts ahead of time



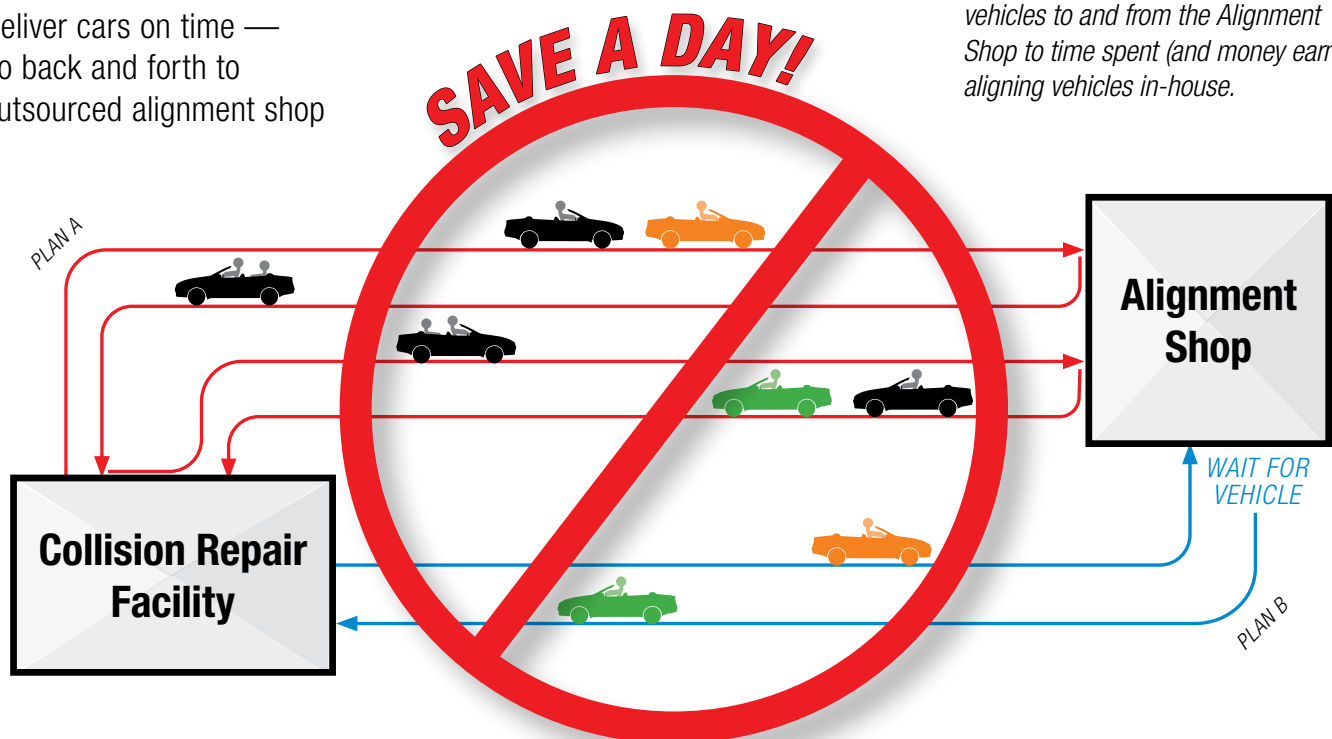
Optional wide angle targets shown

Reduce Operating Expenses and Save a Day

- ✓ Eliminate transport and wait times
- ✓ Ensure quality of alignments
- ✓ Reduce vehicle rental expenses
- ✓ Deliver cars on time — no back and forth to outsourced alignment shop

Consider how much time technicians/porters spend transporting vehicles.

Transform time spent transporting vehicles to and from the Alignment Shop to time spent (and money earned) aligning vehicles in-house.



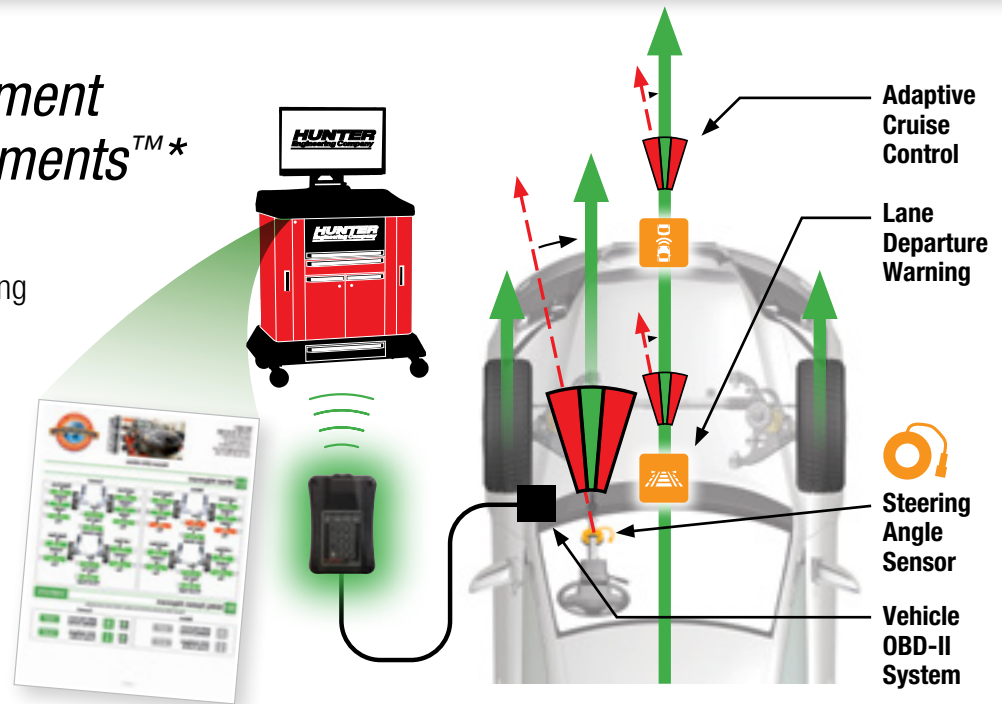
Collision Repair Facility's Transport

Vehicle needing alignment

Aligned Vehicle

Complete and Document Safety System Alignments™*

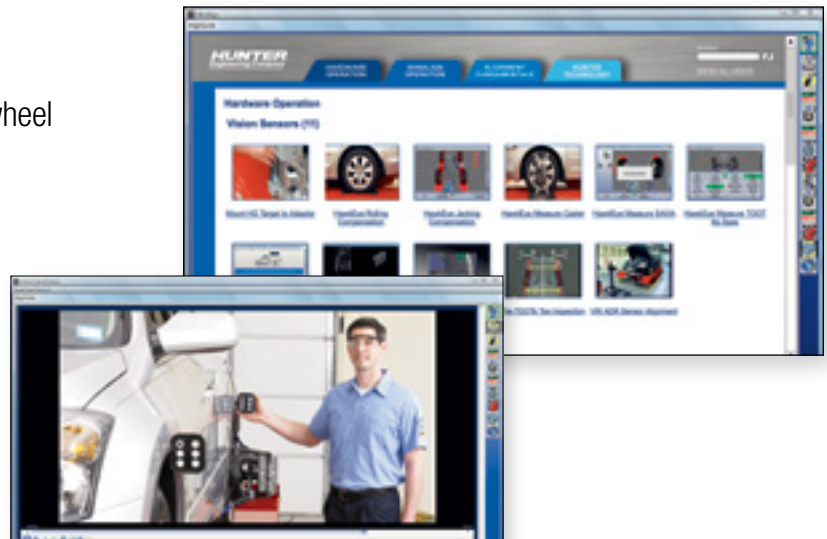
- ✓ Advanced Driver Assist System (ADAS)** calibration and Steering Angle Sensor (SAS)** resets
- ✓ Documentation of results provided for each procedure



Just-In-Time Training

400+ videos and animations cover all aspects of wheel alignment today.

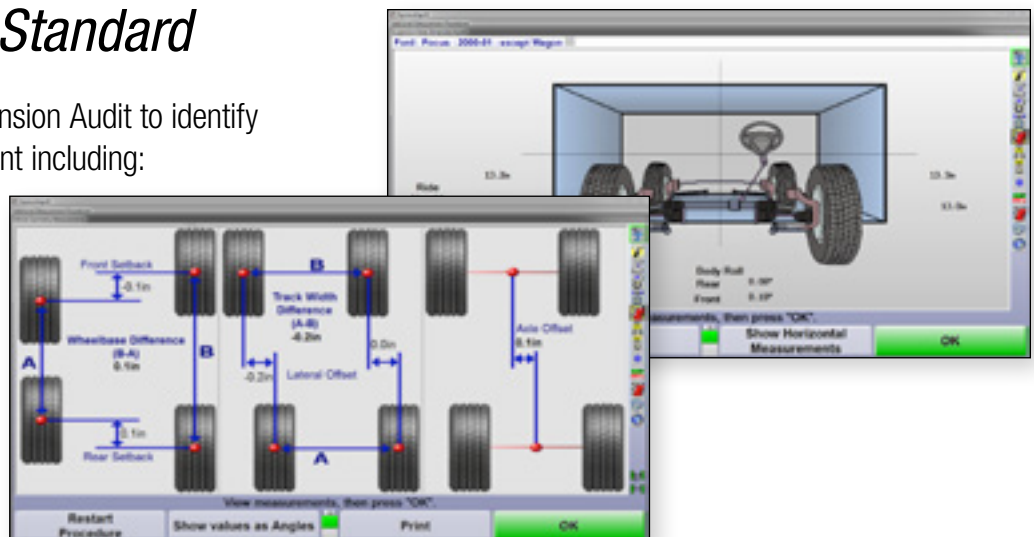
- ✓ Demonstrating typical alignment procedures
- ✓ Step-by-step instructions on how to make alignment corrections and illustrate the causes of problems
- ✓ Assistance with WinAlign "Power Tool" features, measurement/adjustment procedures, and other software functions



Diagnostic Angles Standard

Perform a Suspension Body Dimension Audit to identify components affected in an accident including:

- ✓ Axle setback and offset
- ✓ Wheelbase
- ✓ Trackwidth
- ✓ Ride height
- ✓ Max steer
- ✓ Symmetry, and more



* Additional tools may be required for diagnostic and programming

** Refer to 1708-T for coverage

Perform Complete In-House Alignment Services

Hunter's Portable Turnplate Kit is Compatible with Most Frame Racks

The kit includes four turnplates, ramps, wheel chocks and a wheeled cart that provides easy mobility and compact storage.



Car-o-Liner® example



Chief® example

Flat floor capability also available

Shown with HawkEye Elite® alignment system sold separately.



Inspect vehicles during estimation or set up a bay on the floor to align vehicles that are too large or long for your existing alignment lift.

High-Volume Shops: Free Up Your Frame Rack

Optimize your frame rack availability by adding a Hunter alignment rack.

See Form 7005-T for more details.



Because of continuing technological advancements, specifications, models and options are subject to change without notice.

0521CH

Copyright © 2021, Hunter Engineering Company

HUNTER
Engineering Company

www.hunter.com

Form AB07461-00, 05/21
Supersedes Form 7461-T, 07/18